

National Redress Scheme


Acknowledging the
harm done to people
who experienced child
sexual abuse
in institutions




What is 'redress'?

The Australian Government set up the National Redress Scheme after the Royal Commission into Institutional Responses to Child Sexual Abuse.

Redress is about recognising the harm done to people who experienced sexual abuse as children and holding the institutions responsible to account.



An offer of redress can include:

- a payment
 - counselling that is confidential and culturally safe
 - a direct personal response, such as an apology, from the institution.
- 

Who can apply for redress?

You can apply for redress if:

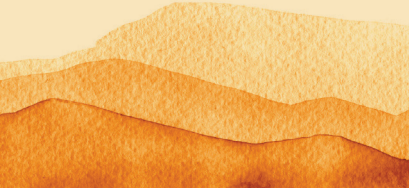
- you experienced sexual abuse when you were under 18 years of age, and
-
- you were born before 30 June 2010, and

- the abuse happened before 1 July 2018 while you were in an institution, and
-

- you are an Australian citizen or permanent resident when you apply.

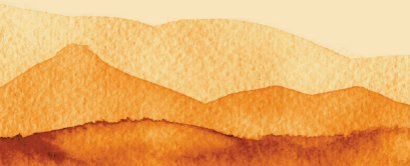
What does 'institutional child sexual abuse' mean?

Institutional child sexual abuse means a person experienced child sexual abuse while in an institution such as a school, church, mission, orphanage, foster care, hospital, detention centre or a sporting club.



Applying for redress

Many people find it helpful to talk to someone about applying, to get help filling in the application form, or when considering an offer. Redress Support Services provide free and effective support.



Contact the National Redress Scheme

To find out more about your options or to connect with Redress Support Services, call **1800 737 377**



Available Monday to Friday, 8am–5pm AET

Or visit
nationalredress.gov.au

DSS3000.0623

National
Redress Scheme