



Australian Government

National Redress Scheme

Acknowledging the harm
done to people who
experienced child sexual
abuse in institutions



Redress is about
recognising the harm
done to people who
experienced sexual
abuse as children and
holding the institutions
responsible to account



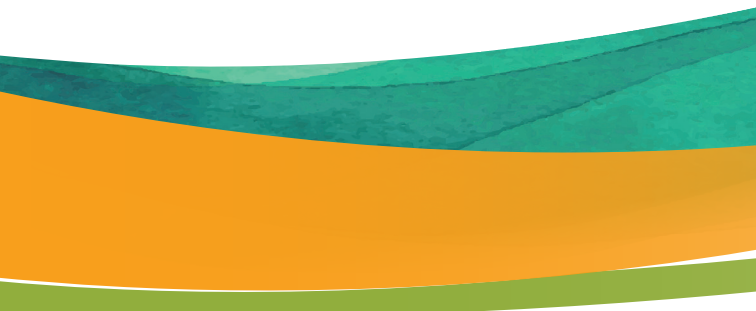
What is the National Redress Scheme?

The Australian Government set up the National Redress Scheme after the Royal Commission into Institutional Responses to Child Sexual Abuse.

Over five years, the Royal Commission heard from more than 16,000 brave people who shared their experiences of sexual abuse that happened when they were in institutions.

What does 'institutional child sexual abuse' mean?

Institutional child sexual abuse means a person experienced child sexual abuse while in an institution such as a school, church, mission, orphanage, foster care, hospital, detention centre or a sporting club. This includes where the institution failed to protect the person from experiencing child sexual abuse, even when not living in the institution.



Who is eligible for redress?

You are eligible for redress if:

- you experienced sexual abuse when you were under 18 years of age, and
- you were born before 30 June 2010, and
- the abuse happened before 1 July 2018 while you were in an institution, and
- you are an Australian citizen or permanent resident when you apply.

Depending on your circumstances, other rules around eligibility may apply.

Applying for redress

People can apply to the National Redress Scheme by filling in a paper or online application form.

An offer of redress can include:

- a payment

- counselling that is confidential and culturally safe

- a direct personal response, such as an apology, from an institution.

You can choose what parts of the redress offer you want to receive.

Many people find it helpful to talk to someone about applying, to get help filling in the application form, or when considering an offer. Redress Support Services provide free and effective support.

Redress Support Services are free and independent. They can:

- provide information about eligibility and discuss other options
- help you fill out the application
- provide emotional support
- speak with the National Redress Scheme on your behalf.

Specialist services are also available for people with disability, from culturally diverse backgrounds, young people, Aboriginal and Torres Strait Islander peoples, care leavers and former child migrants.

Contact the National Redress Scheme



To find out more about your options or to connect with Redress Support Services, call **1800 737 377**

Available Monday to Friday,
8am-5pm



Scan this QR code for more information

Or visit nationalredress.gov.au

National Redress Scheme